

## Ordering Information

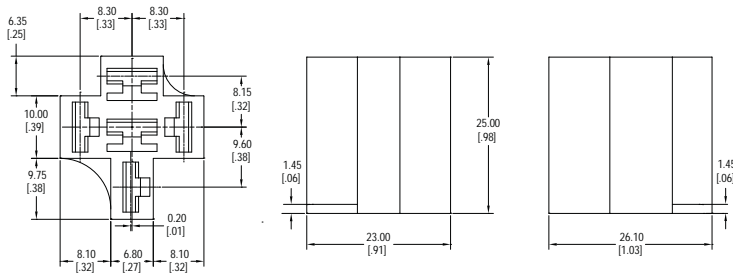
UL recognized sockets are shaded

|                                       | A2 / A9            | J114FL / J114AF  | J151 2C  | J151 3C | J151 4C | J152 2C  | J152 3C  | J152 4C  |
|---------------------------------------|--------------------|------------------|----------|---------|---------|----------|----------|----------|
| <b>Panel Mount / Wire Assembly</b>    | HD-1001<br>HD-1002 |                  | PT08     |         |         | PY08     | PY11     | PY14     |
| <b>PC Pin</b>                         | HD-1003            | P2R05P<br>P2R08P | PT08-0   | PT11A   |         | PY08-02  | PY11-02  | PY14-02  |
| <b>DIN Rail Mountable</b>             |                    | P2F08S           | PTF08A   | PTF11A  | PTF14A  | PYF08A   | PYF11A   | PYF14A   |
| <b>DIN Rail Mountable Finger Safe</b> |                    | P2F08N           | PTF08A-E |         |         | PYF08A-E | PYF11A-E | PYF14A-E |

## Dimensions

Units = mm

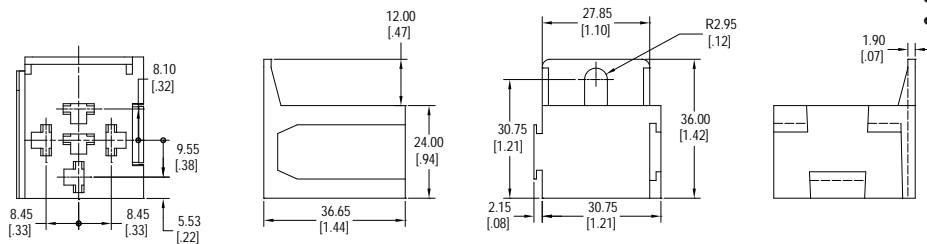
### HD-1001



\*\* The recommended female quick connects are AMP / Tyco :  
 • 60249-1 (12-16 AWG) or equivalent  
 • 42281-1 (14-18 AWG) or equivalent



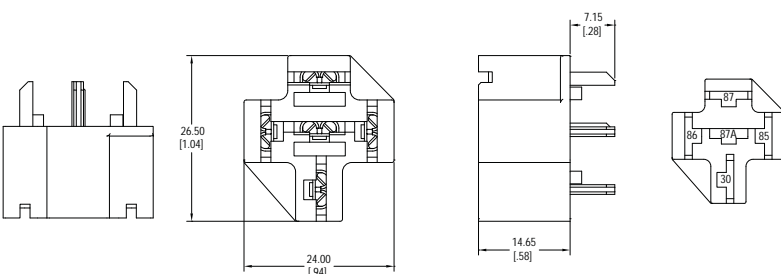
### HD-1002



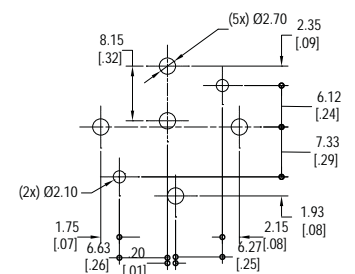
\*\* The recommended female quick connects are AMP / Tyco :  
 • 60249-1 (12-16 AWG) or equivalent  
 • 42281-1 (14-18 AWG) or equivalent



### HD-1003



### PCB Layout

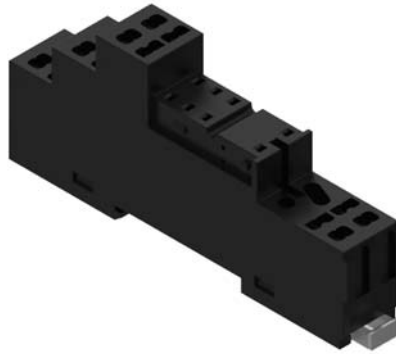
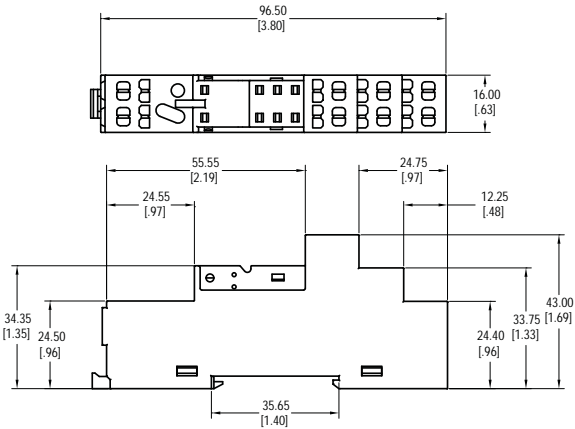


# Socket

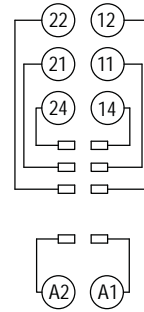
## Dimensions

Units = mm

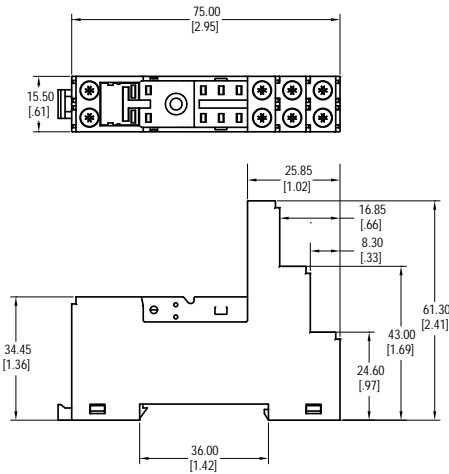
### P2F08N



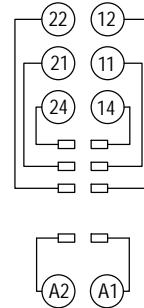
### Schematic



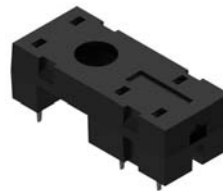
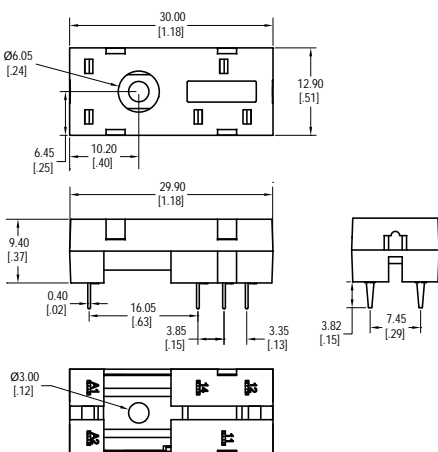
### P2F08S



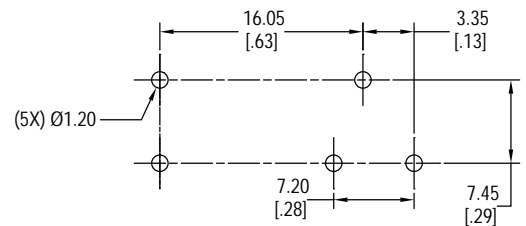
### Schematic



### P2R05P



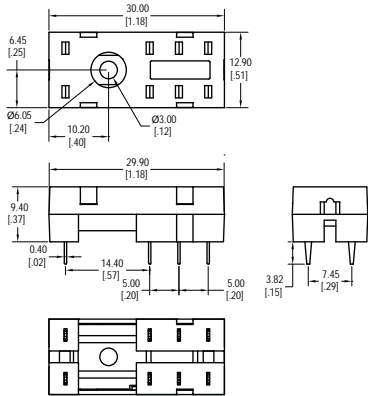
### PCB Layout



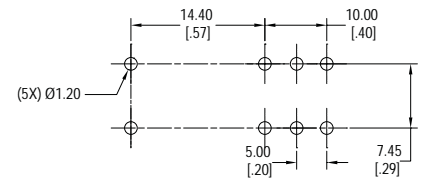
## Dimensions

Units = mm

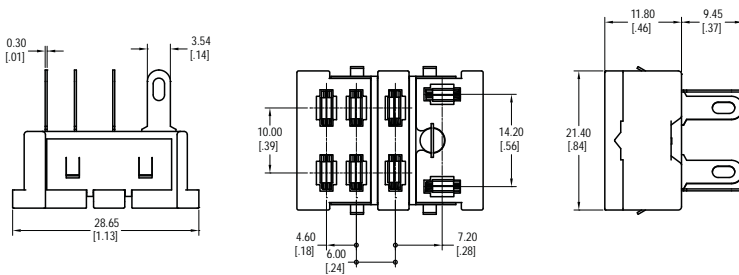
### P2R08P



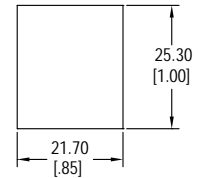
### PCB Layout



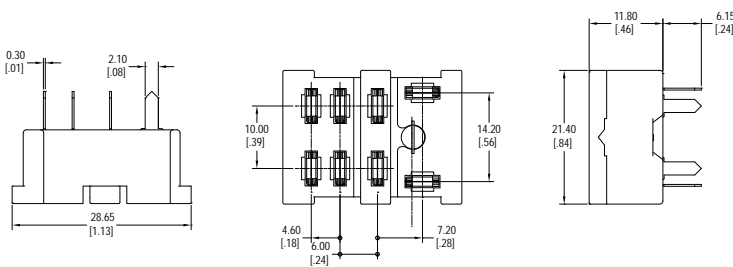
### PT08



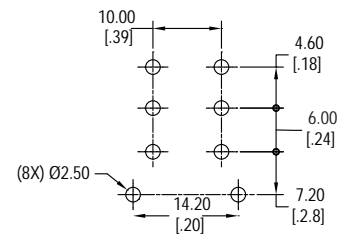
### Panel Cut-Out



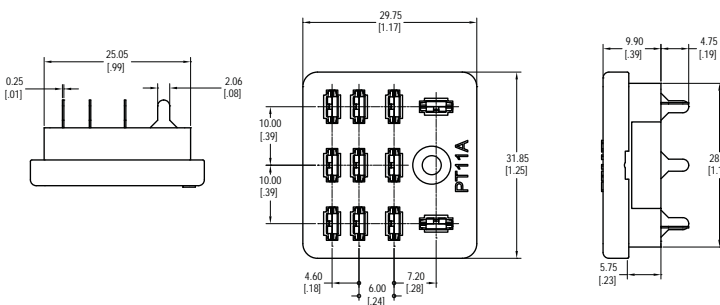
### PT08-0



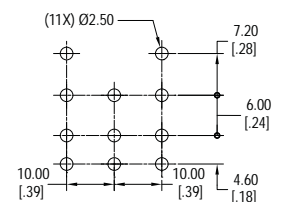
### PCB Layout



### PT11A



### PCB Layout

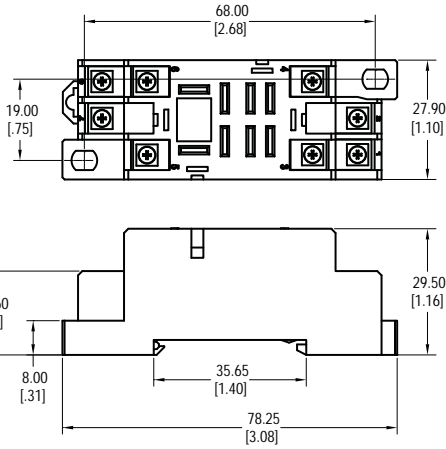


# Socket

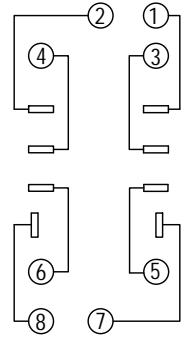
## Dimensions

Units = mm

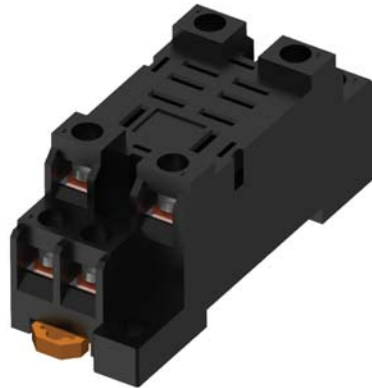
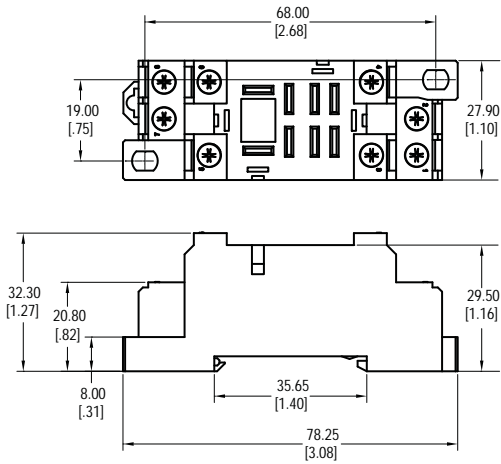
### PTF08A



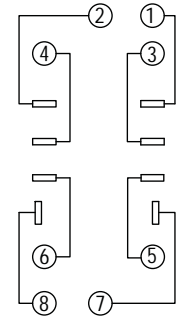
### Schematic



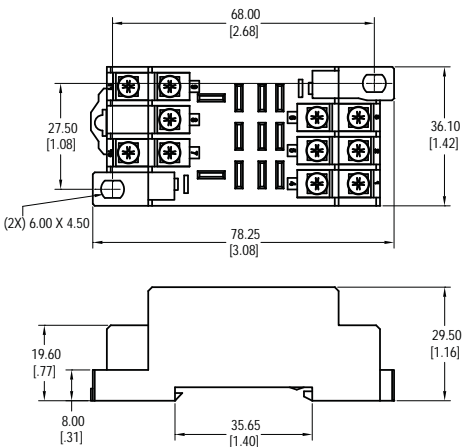
### PTF08A-E



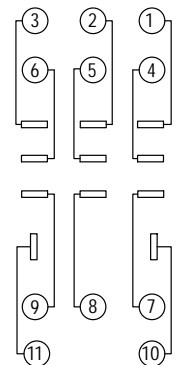
### Schematic



### PTF11A



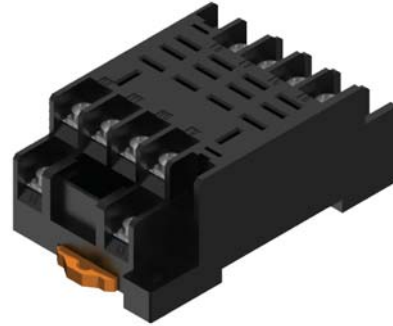
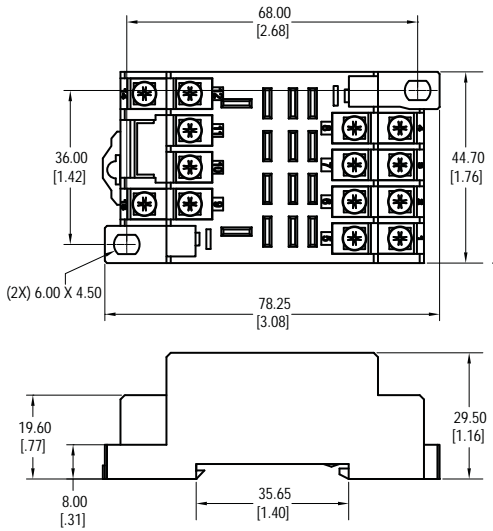
### Schematic



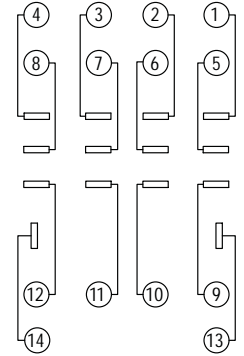
## Dimensions

Units = mm

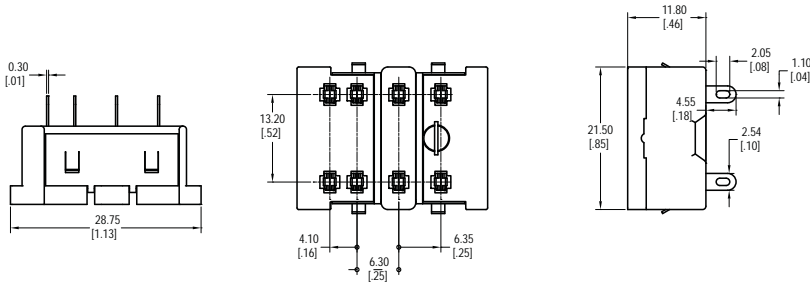
### PTF14A



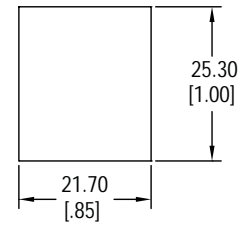
### Schematic



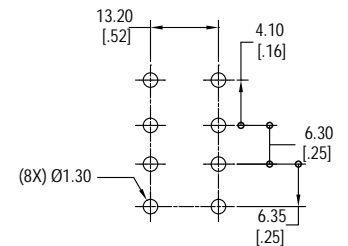
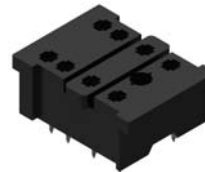
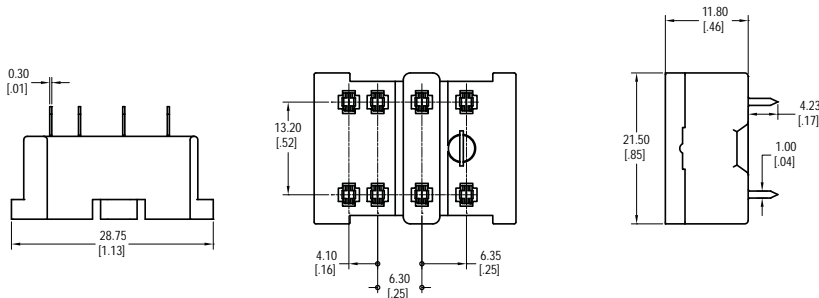
### PY08



### Panel Cut-Out



### PY08-02

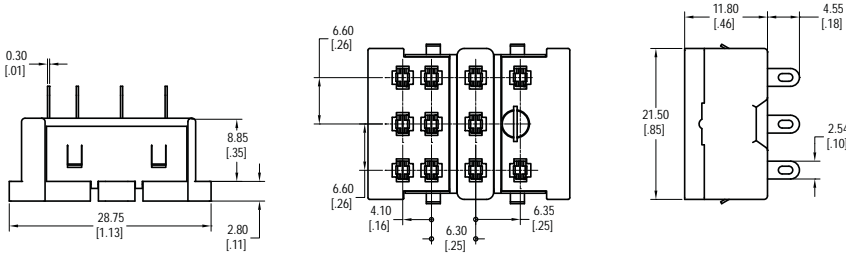


# Socket

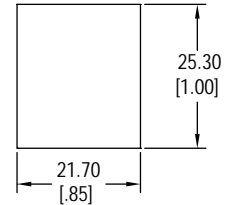
## Dimensions

Units = mm

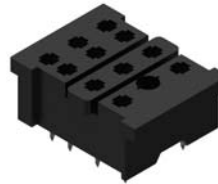
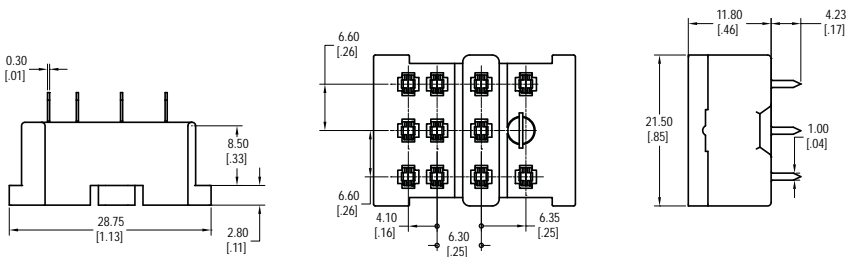
### PY11



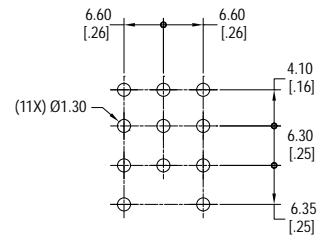
### Panel Cut-Out



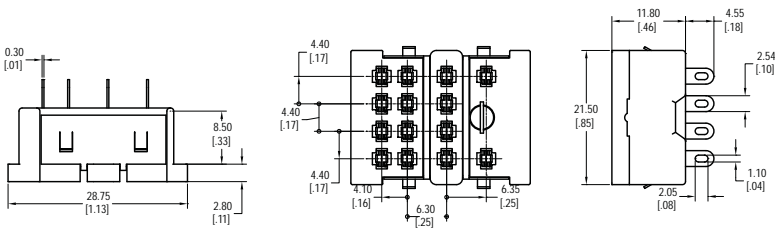
### PY11-02



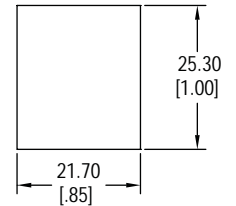
### PCB Layout



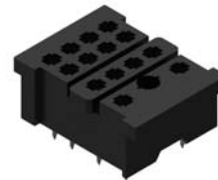
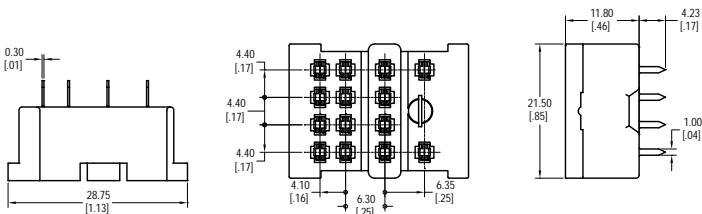
### PY14



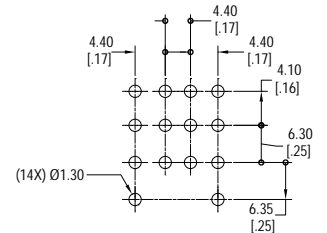
### Panel Cut-Out



### PY14-02



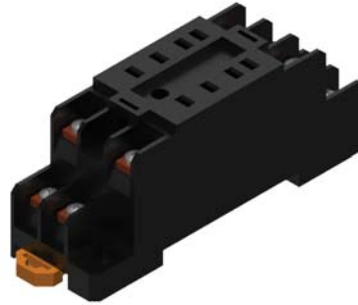
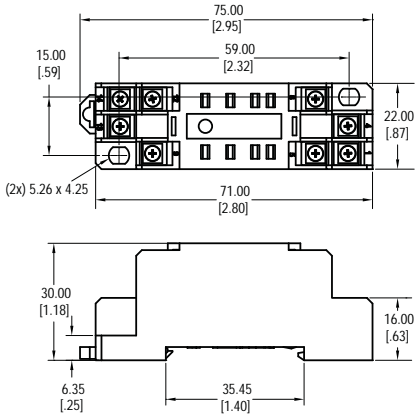
### PCB Layout



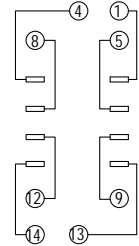
## Dimensions

Units = mm

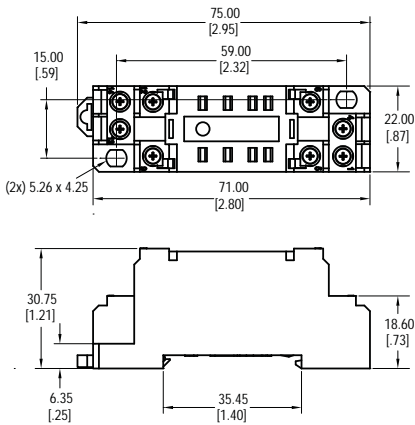
### PYF08A



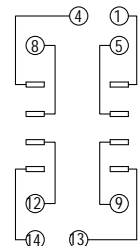
### Schematic



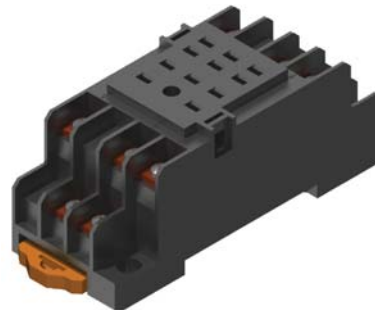
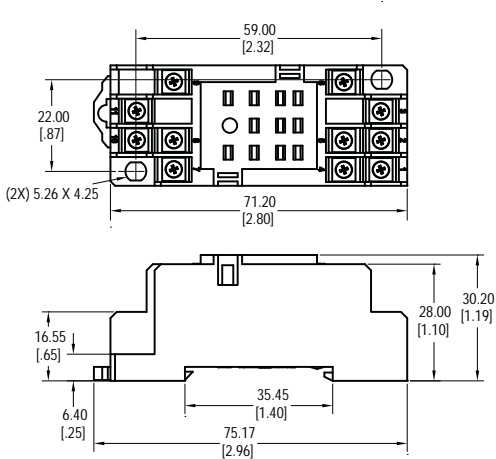
### PYF08A-E



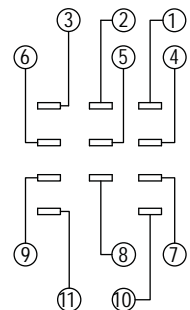
### Schematic



### PYF11A



### Schematic

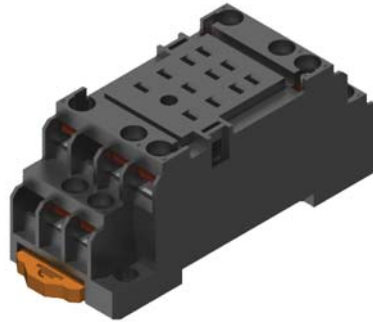
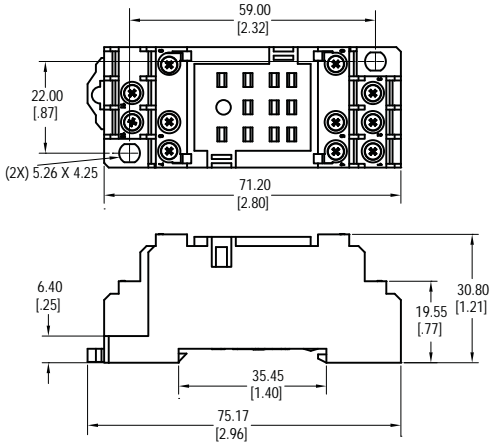


# Socket

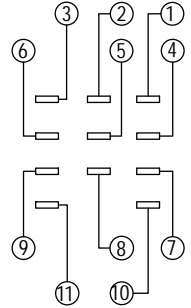
## Dimensions

Units = mm

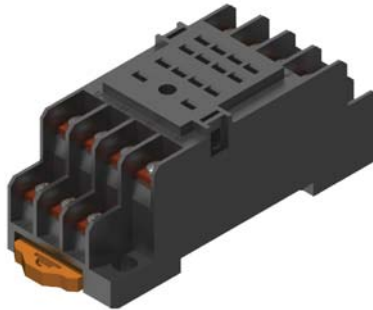
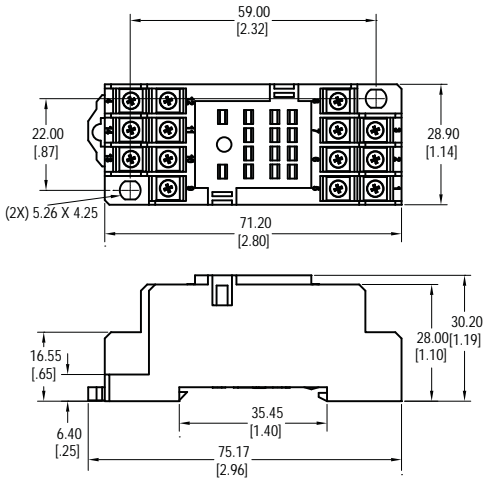
### PYF11A-E



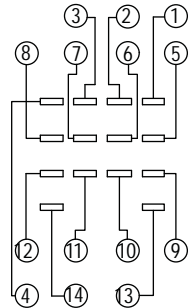
### Schematic



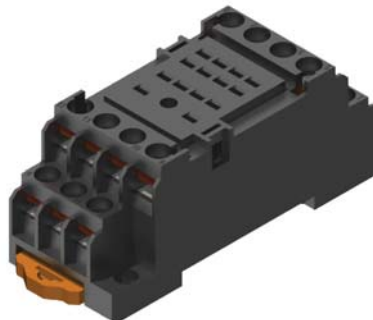
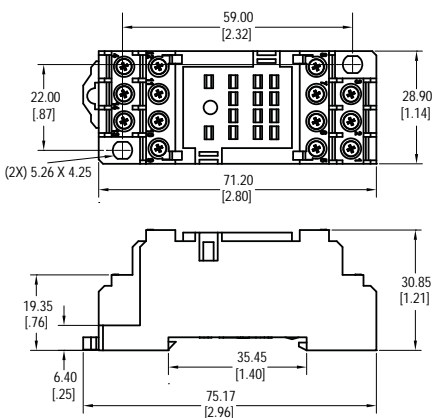
### PYF14A



### Schematic



### PYF14A-E



### Schematic

