

Specifications

Electrical Ratings	50mA @ 35VDC	Dielectric Strength	500Vrms min
Electrical Life	100,000 cycles typical	Insulation Resistance	>100MΩ min
Contact Resistance	<50mΩ initial	Operating Temperature	-40°C to 85°C
Actuation Force	130 ± 50gF	Storage Temperature	-40°C to 85°C
Actuation Travel	.50 ± .1mm		

Materials

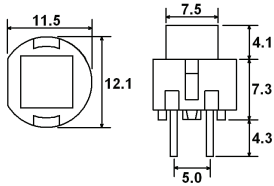
Cover	Poly Carbonate (PC)
Base	Valox
Contacts	Copper Alloy, Silver Plated
Terminals	Copper Alloy, Silver Plated

Ordering Information

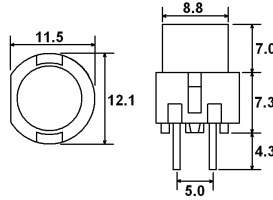
1. Series	SH	B	L	B	A	MS
SH						
2. Actuator Options	<p>A = Square B = Round C = Flat D = Post E = Large Square Cap</p>					
3. Actuator Color	<p>Non-Illuminated Options 1 = White 6 = Orange 2 = Black 7 = Blue 3 = Red 8 = Dark Gray 4 = Yellow 9 = Beige 5 = Green</p> <p>Illuminated Options L = LED Option - Clear Actuator Color L1 = LED Option - With Laser Etching Style ** LED only available with A & B actuators</p>					
4. LED Color	<p>Blank = No LED R = Red G = Green Y = Yellow B = Blue W = White</p> <p>Bi-Color LED Color RG = Red/Green RY = Red/Yellow YG = Yellow/Green GB = Green/Blue RB = Red/Blue YB = Yellow/Blue</p>					
5. Laser Etching Styles	<p>Blank = No Laser Etching A D G K B E H C F J</p> <p>** Laser etching styles are only available with the A or B actuator. A colored film is applied to the actuator and is laser etching to allow the LED to shine through the pattern.</p>					
6. Laser Etching Colors	<p>Blank = No Laser Etching Color MS = Misty Silver BS = Bright Silver BG = Bright Gold</p> <p>** A colored film is applied to the actuator and is laser etched to allow the standard color of the actuator or the LED to shine through the pattern</p>					
7. Caps	<p>Blank = No Cap C15 C22 C11 C16 C26 C12 C17 C13 C18 C14 C19</p> <p>Cap Colors ** See Cap Options for color availability ** Caps available with D actuator only</p>					

Dimensions

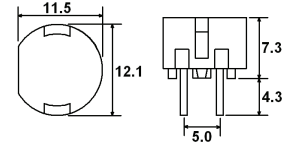
A, Square



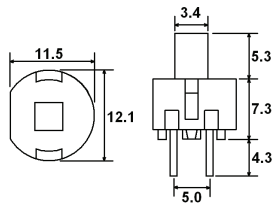
B, Round



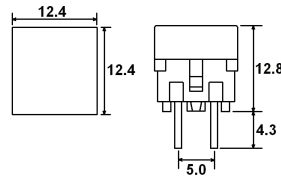
C, Flat



D, Post

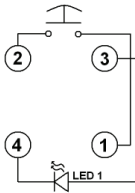


E, Square Cap

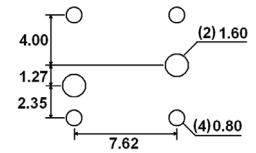
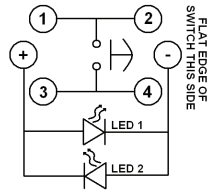


Schematic & PC Layout

Single LED



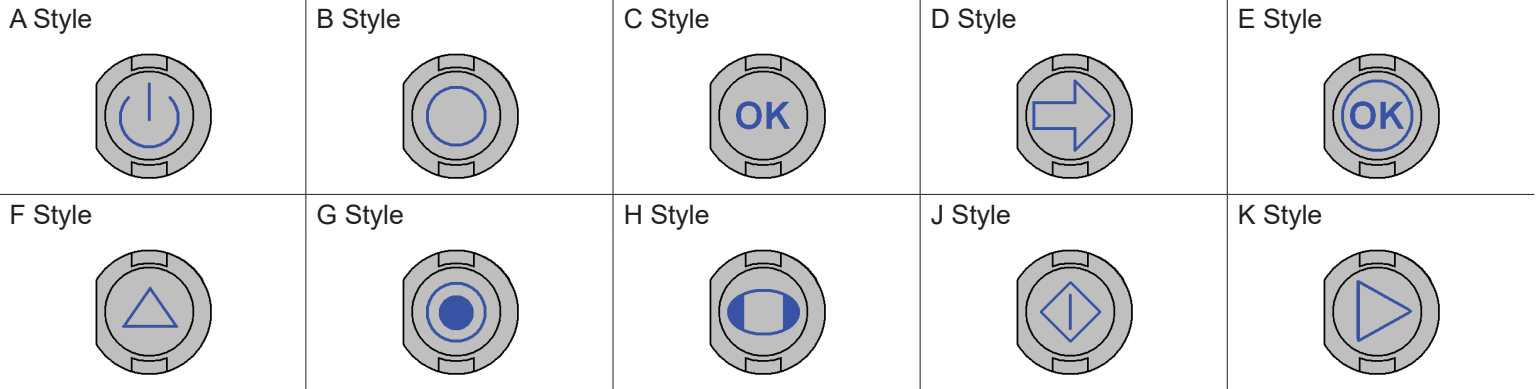
Dual LED



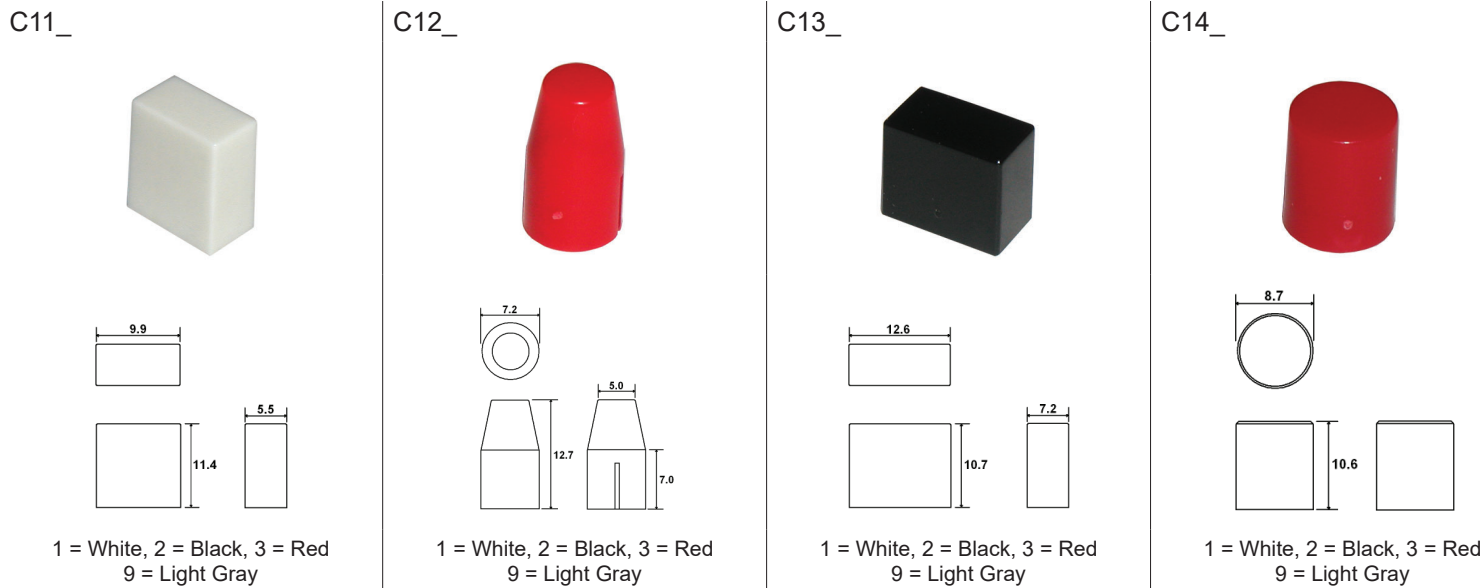
LED Characteristics

LED Ratings		Color					
		R	G	Y	B	W	Units
Reverse Voltage	V_R	5	5	5	5	5	V
Forward Current (avg / peak)	I_F	30 / 125	30 / 125	30 / 125	30 / 125	30 / 125	mA
Reverse Current $V_R = 5V$	I_R	10	10	10	10	10	μA
Power Dissipation	P_T	69	75	75	120	120	mW
Forward Voltage (typ / max) $I_F = 20mA$	V_F	1.8 / 2.3	2.0 / 2.5	2.0 / 2.5	3.5 / 4.0	3.5 / 4.0	V
Wavelength at Peak Emmission, $I_F = 20mA$	λ_P	660	572	595	455	n/a	nm
Spectral Line Half-Width, $I_F = 20mA$	$\Delta\lambda$	20	20	20	30	na/	nm
Luminous Intensity, $I_F = 20mA$	LI	20	20	80	40	200	mcd
Viewing Angle	Θ	150	150	150	150	150	deg

Laser Etching Styles

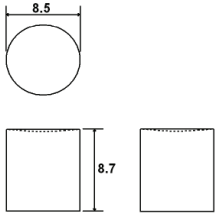


Cap Options for D Actuator Contact Factory for other available colors



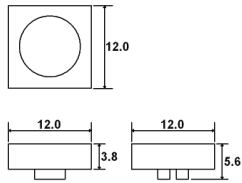
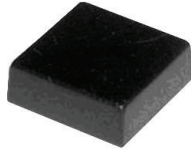
Cap Options for D Actuator Contact Factory for other available colors

C15_



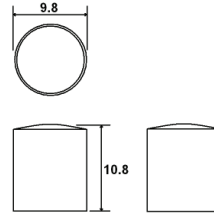
2 = Black, 0 = Clear

C16_



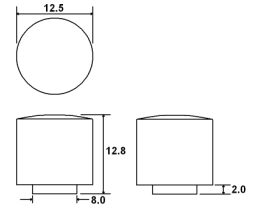
1 = White, 2 = Black, 3 = Red
7 = Blue

C17_



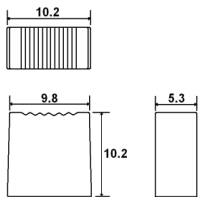
2 = Black, 0 = Clear

C18_



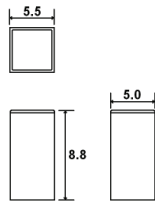
1 = White, 2 = Black
9 = Light Gray

C19_



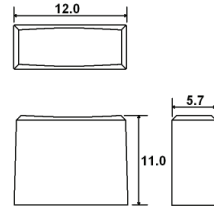
1 = White, 2 = Black, 3 = Red
8 = Dark Gray

C22_



2 = Black, 8 = Dark Gray
9 = Light Gray

C26_



1 = White, 2 = Black, 3 = Red
9 = Light Gray