



Features

- Switching capacity up to 20A; small size and light weight
- Low coil power consumption; high contact load
- Strong resistance to shock and vibration

Contact Data

Contact Arrangement	1A, 1B, 1C = SPST N.O., SPST N.C., SPDT	Contact Resistance	< 50 milliohms initial
	2A, 2B, 2C = DPST N.O., DPST N.C., DPDT	Contact Material	AgCdO
Contact Rating	3A, 3B, 3C = 3PST N.O., 3PST N.C., 3PDT	Maximum Switching Power	5540VA, 560W
	1 Pole : 20A @ 277VAC & 28VDC, General Purpose	Maximum Switching Voltage	300VAC
	2 Pole : 12A @ 250VAC & 28VDC, General Purpose	Maximum Switching Current	20A
	2 Pole : 10A @ 277VAC, General Purpose; 1/2hp @ 125VAC		
	3 Pole : 12A @ 250VAC & 28VDC, General Purpose		
	3 Pole : 10A @ 277VAC, General Purpose; 1/2hp @ 125VAC		

Coil Data DC Parameters

Coil Voltage VDC		Coil Resistance Ω +/- 10%		Pick Up Voltage VDC (max) 75% of rated voltage	Release Voltage VDC (min) 10% of rated voltage	Coil Power W	Operate Time ms	Release Time ms
Rated	Max	.9W	1.4W					
12	15.6	160	100	9.00	1.2	.90 1.40	25	25
24	31.2	650	400	18.00	2.4			
110	143.0	11000	8400	82.50	11.0			

Coil Data AC Parameters

Coil Voltage VAC		Coil Resistance Ω +/- 10%		Pick Up Voltage VAC (max) 80% of rated voltage	Release Voltage VAC (min) 30% of rated voltage	Coil Power W	Operate Time ms	Release Time ms
Rated	Max	1.2VA	2.0VA					
12	15.6	46	25.5	9.60	3.6	1.20 2.00 2.50	25	25
24	31.2	184	102	19.20	7.2			
110	143.0	3900	2300	88.00	33.0			
120	156.0	4550	2530	96.00	36.0			
220	286.0	14400	8600	176.00	66.0			
240	312.0	19000	10555	192.00	72.0			

J151

General Data

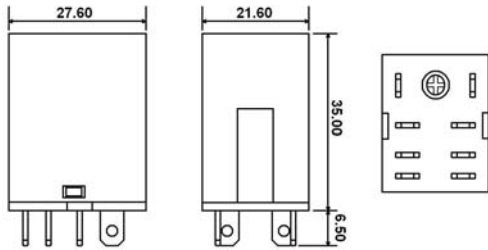
Electrical Life @ rated load	100K cycles, typical	
Mechanical Life	20M cycles (1 & 2 pole), typical; 10M cycles (3 pole), typical	
Insulation Resistance	100M Ω min. @ 500VDC	
Dielectric Strength,	Coil to Contact	1500V rms min. @ sea level
	Contact to Contact	1500V rms min. @ sea level
Shock Resistance	100m/s ² for 11 ms	
Vibration Resistance	1.27mm double amplitude 10~40Hz	
Terminal (Copper Alloy) Strength	10N	
Operating Temperature	-40°C to +85°C	
Storage Temperature	-40°C to +155°C	
Solderability	260°C for 5 s	
Weight	2C: 40g; 3C: 50g	

Ordering Information

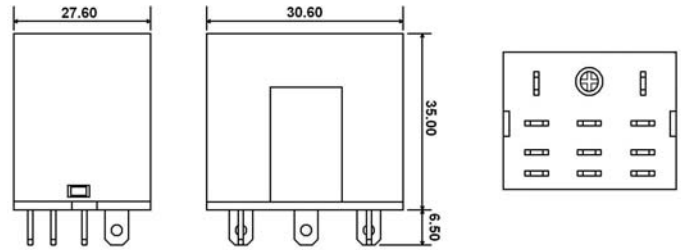
1. Series	J151	2C	T	12VDC	.9
J151					
2. Contact Arrangement	1A, 1B, 1C 2A, 2B, 2C 3A, 3B, 3C				
3. Termination	T = Solder lugs / Plug-in F = Solder lugs / Plug-in with Flange P = PCB Terminals				
4. Coil Voltage	12VDC 12VAC 24VDC 24VAC 110VDC 110VAC 120VAC 240VAC 220VAC				
5. Coil Power	.9 = .9W (DC coil for use with 1 and 2 pole models only) 1.4 = 1.4W (DC coil for use with 3 pole models only) 1.2 = 1.2VA (AC coil for use with 1 and 2 pole models only) 2.0 = 2.0VA (AC coil for use iwth 3 pole models only)				
6. Option LED	Blank = No indicator LED D = With indicator LED				
7. Gold Option	Blank = Standard contact G = Gold over standard contacts				
8. Push to Test Option	Blank = Without push to test button T = With push to test button				

Dimensions

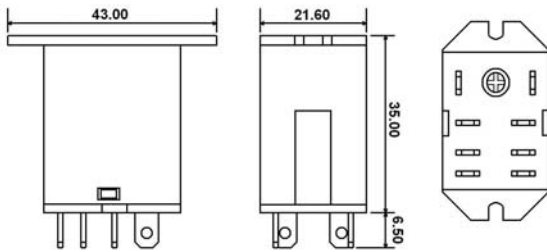
Units = mm



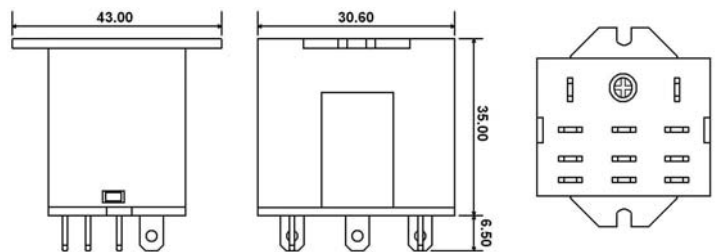
1 & 2 Pole



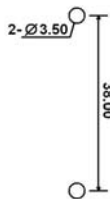
3 Pole



1 & 2 Pole with Flange

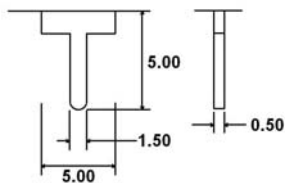


3 Pole with Flange

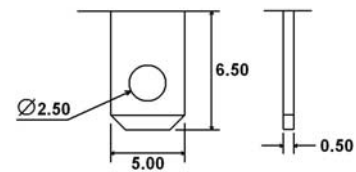


Flange Mount Layouts

Termination Options



PC Pins



Solder Tabs